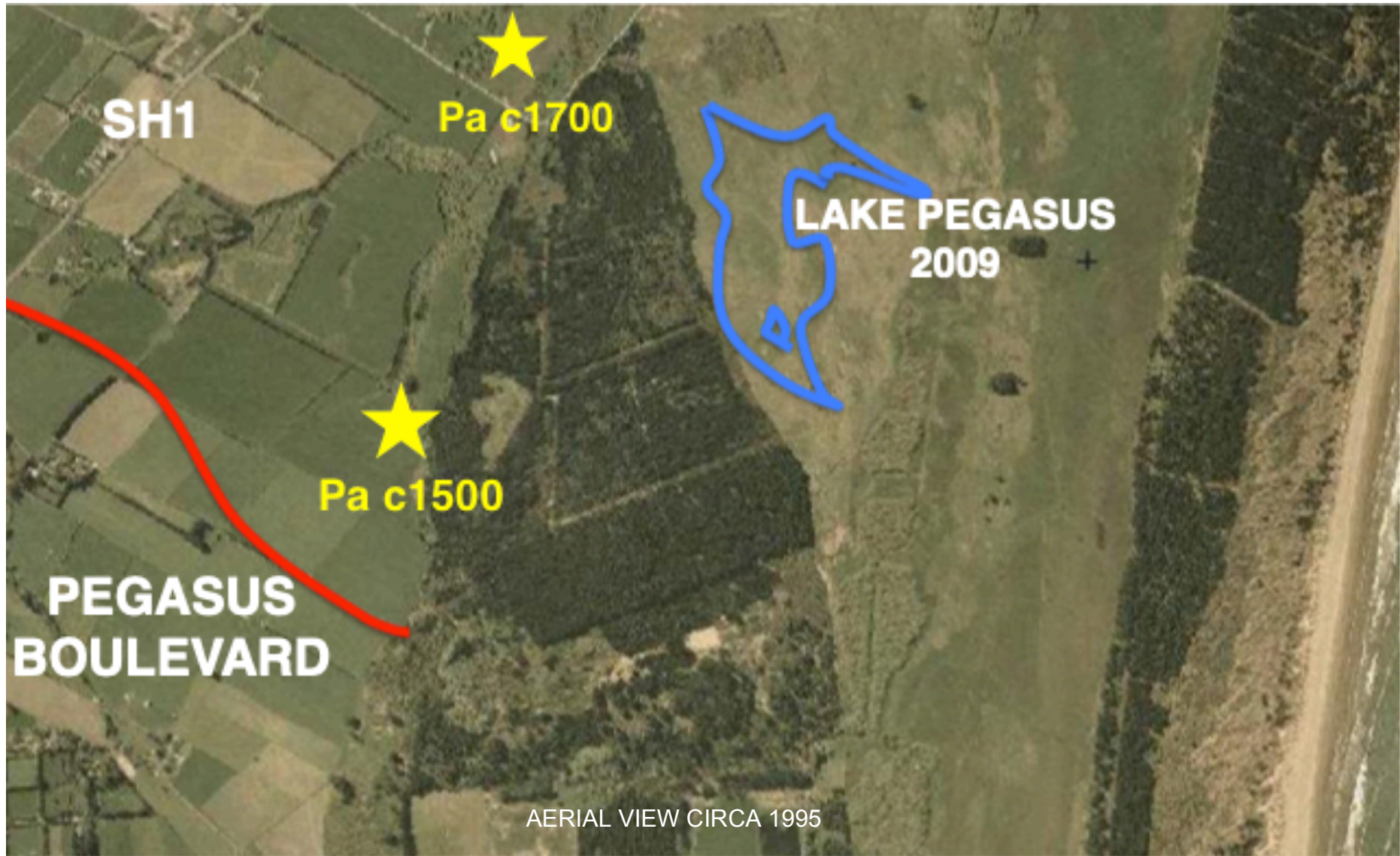


Lake Pegasus: *Then 'till Now*

-a glimpse of what came before the Lake and Pegasus Radio Sailing Club.



This brief view of the past commences from when there is evidence of the earliest permanent residents.

Circa 1500 –Early Maori lived in the Pegasus area, as shown by the previously unknown Taerutu Pa site uncovered during Pegasus Town development near the Golf Club tennis courts - the oldest known Pa site in the South Island. A replica Pa entrance has been built at this site.



Circa 1700 to 1830s – A significant Maori stronghold, Kaiapoi Pa, next to the north end of present Pegasus Town was occupied by Ngai Tahu until overrun and destroyed by Te Rauparaha in a battle during 1832.

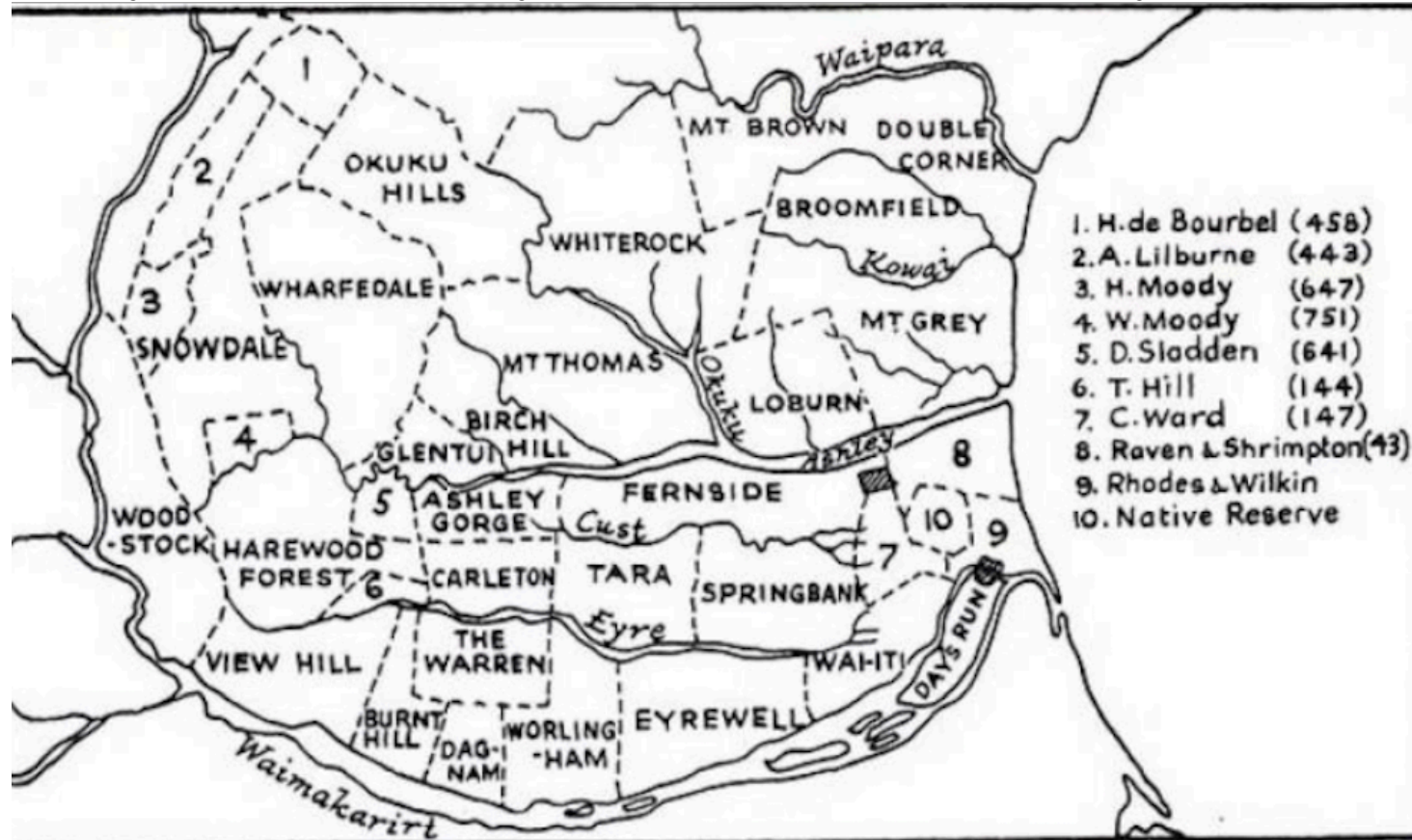


This site remains a historical site, with a monument (pictured) erected in 1898, remaining today.

The low ridge running between these two Pa sites holds evidence of being the largest Pounamu (Greenstone) working area known in New Zealand. A layer of earth was added across this ridge during Pegasus development in part to preserve this culturally sensitive area from fossickers).

Also during development, a Waka was pulled from a swampy area adjacent to the early Pa site and greenstone working area.

1850 onward, the area was cleared, drained and developed into farmland. Watercourses behind the coastal dunes that had been navigable by waka from the Ashley / Rakahuri estuary became shallow and swampy.



THE EARLY WAIMAKARIRI-WAIPARA SHEEP STATIONS

From 1853 the area was farmed by Raven and Shrimpton as a sheep station covering from Woodend Beach Road, north to the Ashley River, and inland to Rangiora.

This was later split into smaller farming lots.

1980s - Waimakariri District Council purchased the Pegasus Town area as a possible future dump site, but never used it for this purpose.

1997 - The land was sold for private development and a plan for a new residential town was made, including 1000 residential sites, an 18 hole golf course, a school, hospitality businesses, community facilities, and the centrepiece: a 14ha recreational lake and surrounding parkland.

2006 - Earthworks commenced. Spread across 250 ha of pine forest, dunes and bog, this included



removing 1,000,000m³ of earth to form Lake Pegasus.

The Lake itself was at that stage farmed paddocks alongside a young pine plantation, while a swampy area east of the current lake, was enhanced to form the current “wetland”

2009 The Lake was completed and filled, featuring over 3.5km of shoreline, various beaches and jetties.

Filled mainly by groundwater springs, the lake is up to 5m in depth. The average outflow is 12 litres per second. It is consented to remain suitable for secondary contact activities such as boating. However, for much of the year, the lake water meets standards for swimming (algae blooms can restrict swimming in the warmer months).



2016 The population was growing and the lake was being used regularly for activities such as triathlon, Wakaama, Dragon boats, Dinghy Sailing, Paddle boards and Kayaking.



2018 Pegasus Radio Sailing Club was established, after a regional contest showed the venue to be superb for this sport.

Numerous radio sailing events have been held on the lake since then with PRSC being a respected club within the national radio sailing community.





As the Maori Proverb quoted at the Pegasus Town Entrance states:

“Mate atu he tetekura, ara mai he tetekura”

“As one fern frond dies, another rises to take its place”

Sources: Pegasus Residents Group Inc. 10-year Celebration presentation/Todd Properties Pegasus Town Ltd.

New Zealand Geographic Magazine: “Pegasus Rising” December, 2011

“Ravenswood” Subdivision - Site History incl: Rangiora by D.N. Hawkins and Beyond the Waimakariri by D.N. Hawkins

Te Karaka: Magazine of Ngai Tahu - Issue 38, Autumn 2008